



HORISHNI PLAVNI

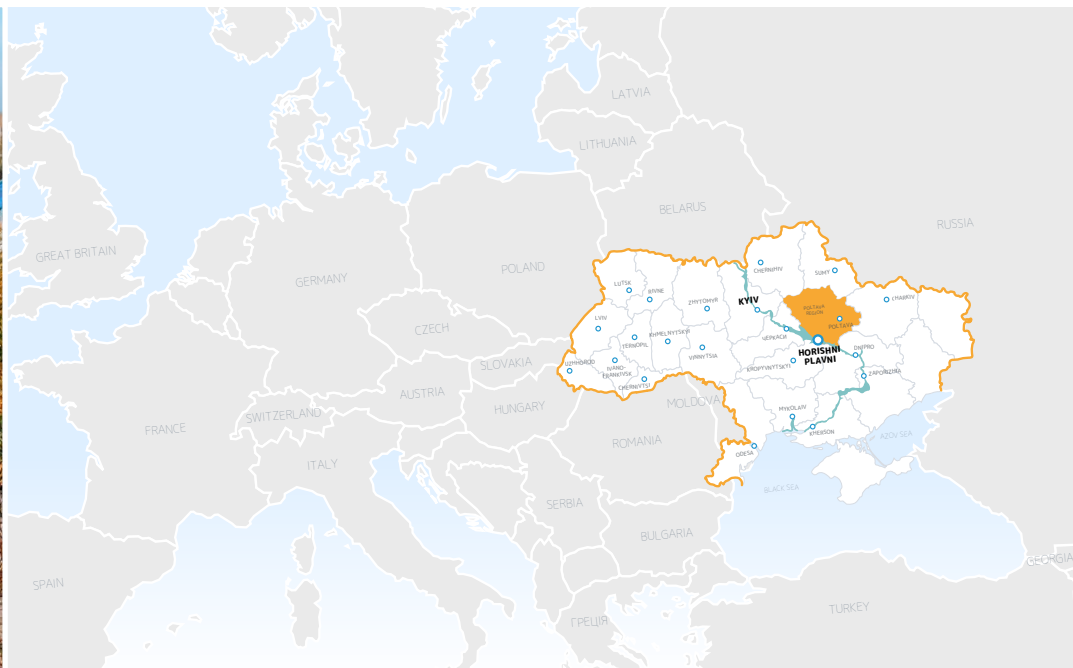
**A CITY OF
PROFESSIONALISM**



Investment Passport



Horishni Plavni is the youngest city of Poltava region, one of the region's largest industrial and cultural centers, and a city of regional importance. It is situated on the left bank of the Dnipro, Ukraine's largest river, in the Dnipro lowland in the physiographic region of forest steppe. The city can be reached by highways, river transport, and rail as the city has Zolotnyshyne Railway Station.



Area of Horishni Plavni City ATC:
174,51 km²



Average annual temperature:
+21,5°C in summer, -6,0 °C in winter



Permanent residents
as 01/01/2020: 55 042



People employed in the city's economy: 20 394 особи



Distance to Kyiv, the capital of Ukraine: 314 km



Distance to Poltava, the regional center: 109 km



Distance from Horishni Plavni to airports:

to Boryspil (the main Ukrainian airport): **320 km**
to Poltava airport: **112 km**



Distance to closest seaports:

Berdiansk: **447 km**
Mariupol: **478 km**
Odesa: **498 km**



Closest river port:

Kremenchuk: **20 km**

MORE INFORMATION AND FEEDBACK:

Department of Economic Development and Resources of the Executive Committee of Horishni Plavni City Hall

d_economic@hp-rada.gov.ua

+38 (05348) 4-44-60, 6-16-81,
+38(067) 470-81-12

Executive Committee of Horishni Plavni City Hall

24 Myru street, Horishni Plavni, Poltava region, 39800

+38 (05348) 4-44-60, 6-16-81,
+38 (067) 470-81-12 (Mayor's reception);
+38 (05348) 4-44-62, 6-16-80,
+38 (067) 532-05-72 (information desk)



Dear ladies and gentlemen!

Horishni Plavni is a young city near the Dnipro that is full of energy and potential, boasts a large degree of welfare, a developed economy, favorable conditions for both business and recreation.

The city is uniquely characterized by its dynamism and creativity, enabling its residents to actively engage in community life, address problems together, respond to existing challenges, change conventional approaches to managing and sharing resources, and implement technical innovations.

The city has powerful production facilities, state-of-the-art technologies in the knowledge economy, a growing consumer market, and a highly skilled workforce. We confidently build our future and see potential for our development as a modern European city with a vibrant economy. Work with us if you count on success and are willing to work fairly and transparently!

Anyone who has been to Horishni Plavni at least once will surely want to come back. In this welcoming city, you feel like living, working, and recreating.

Horishni Plavni is a city of power and energy of growth coming from its very hearth!

Yours sincerely,
Mayor
Dmytro Bykov



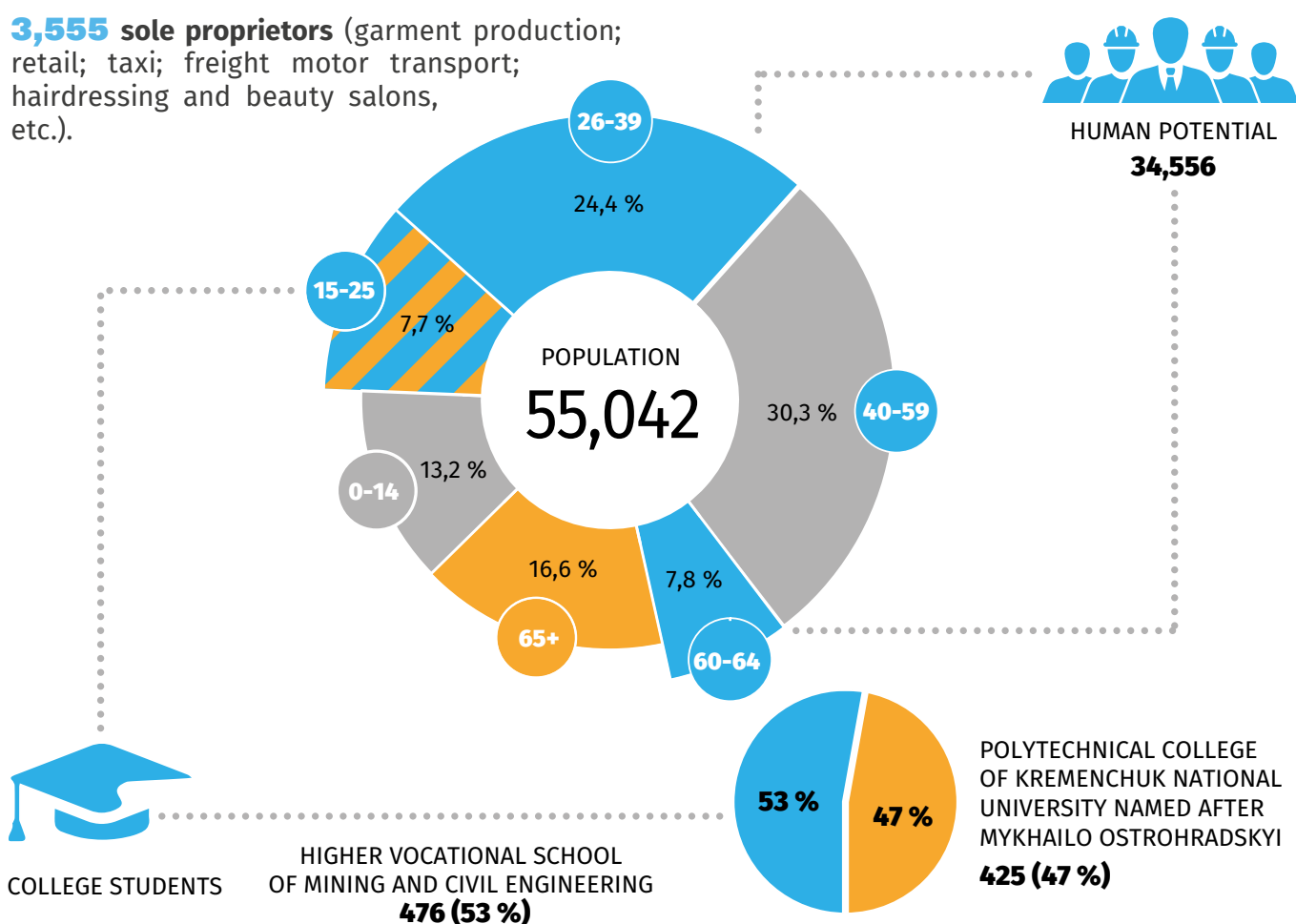
Potential workforce

Average monthly salary of full-time employees is US\$ 590. UAH 14,990 a month in 2019, exchange rate: 25.5 UAH/USD.

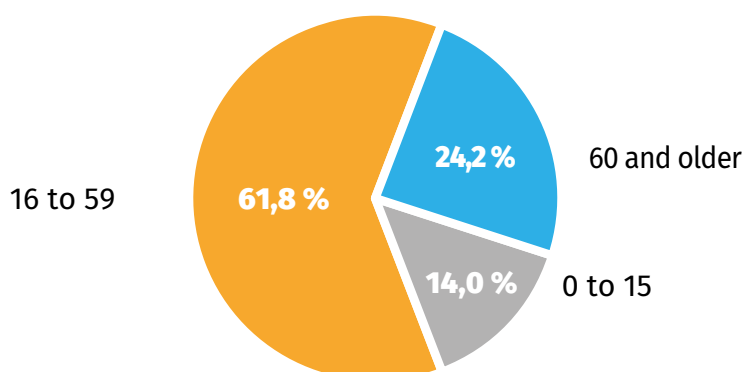
As of 1/1/2020, **4,303** business entities are registered, including:

748 legal entities (extraction of metal ores; extraction of other mineral resources and quarrying; garment production; production of rubber and plastic products; production of finished metal products, etc.);

3,555 sole proprietors (garment production; retail; taxi; freight motor transport; hairdressing and beauty salons, etc.).



Age structure of the region's population



Community's economy

The city's economy is based on industry. Production features **37** statistically large industrial companies in areas of economic activity such as mining, processing, generation and distribution of electricity, heat, and water. Mining is the core industry that accounts for **91.0%** of the city's total industrial sales.

PrJSC "Poltava Mining and Dressing Works" and "Yerystivskyi Mining and Dressing Works" LLC, both Ferrexpo group companies, represent the mining industry and determine the city's industrial output.

2,085 sole proprietors operate in the community's small business arena, accounting for **59%** of all individuals registered as business owners. The total number of people engaged in small business (business owners and their employees) added **69 people** (or 1.8%), reaching **3,912** in 2019 compared with 2018.

About **200** small businesses operate in the city. Such business entities mainly produce knitwear, provide services such as taxi, truck transportation, hairdressing, and beauty salons etc.

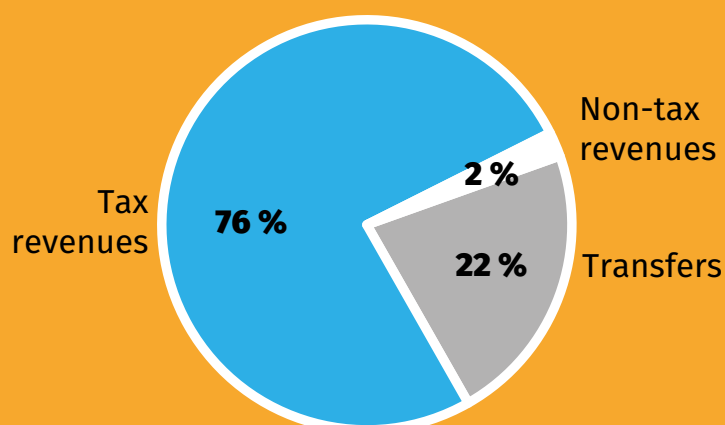
The average monthly salary in Q4 2019 was **UAH 15,934**, or **53.7%** above the average in Poltava region (**UAH 10,370**) and **42%** above the average in Ukraine (**UAH 11,220**).

The city boasts extensive penetration of foreign capital in the region's economic development. Direct investments as of 10/1/2019 were **\$ 937.8 mln** (80.9% of Poltava region's total). Capital investment was **UAH 69.3 thousand** per capita in 2018.

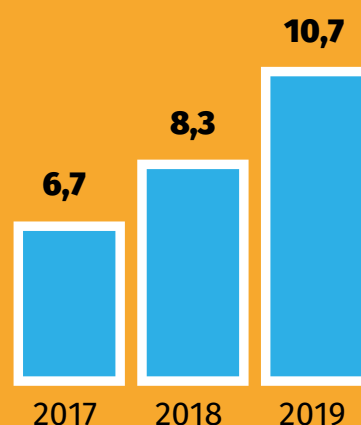
In January–September 2019, the city's industrial sales (products, goods, services) were **UAH 25,409.1 mln** ex. VAT and excise; per capita industrial output was **UAH 476.4 thousand**.

The extracting industry accounts for the bulk of industrial sales, with the largest contribution made by PrJSC "Poltava Mining and Dressing Works," which accounts for **76.2 %** of the city's total industrial sales.

Budget revenue structure



Own budget revenue, per capita, thousand UAH



City's companies



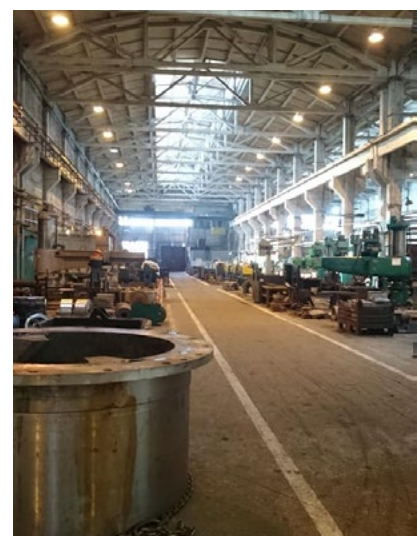
Extraction of metal ores and other mineral resources, quarrying:

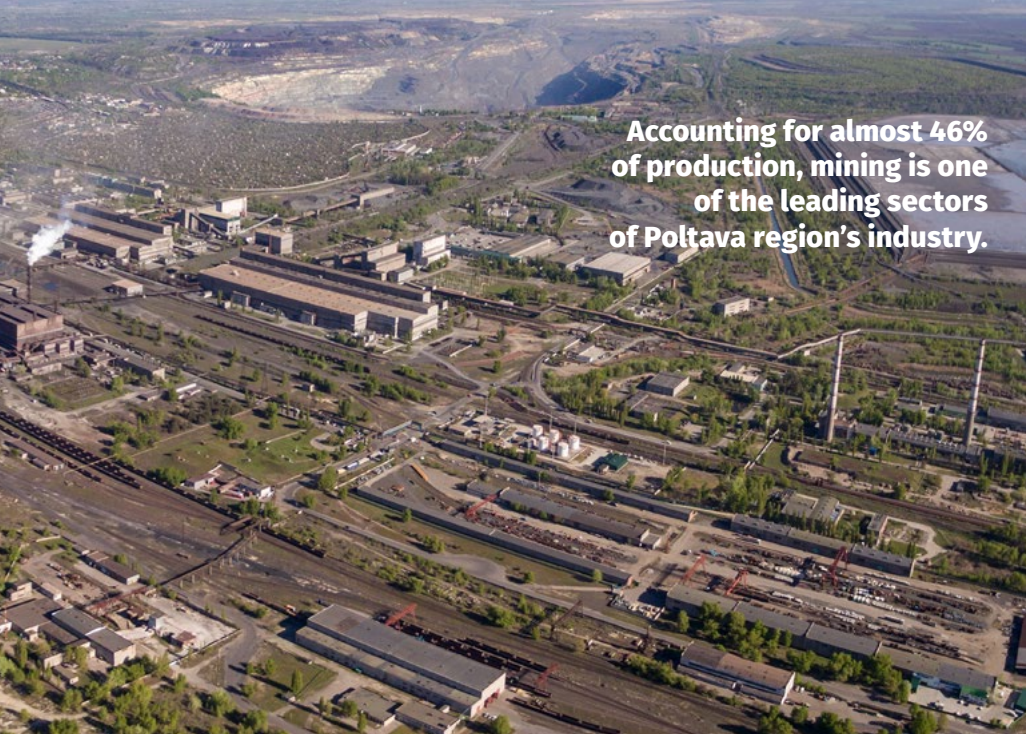
- PrJSC "Poltava Mining and Dressing Works"
- "Yerystivskyi Mining and Dressing Works" LLC
- PJSC "Ryzhivskyi Granite Quarry"
- Redutskyi Quarry of Industrial Management Center, a branch of PJSC Ukrzaliznytsia



Manufacture of finished metal products, except machinery:

- "Ferolit" Research and Production Enterprise
- PE "Production and Commercial Enterprise Yevrostal-Komsomolsk"





Accounting for almost 46% of production, mining is one of the leading sectors of Poltava region's industry.



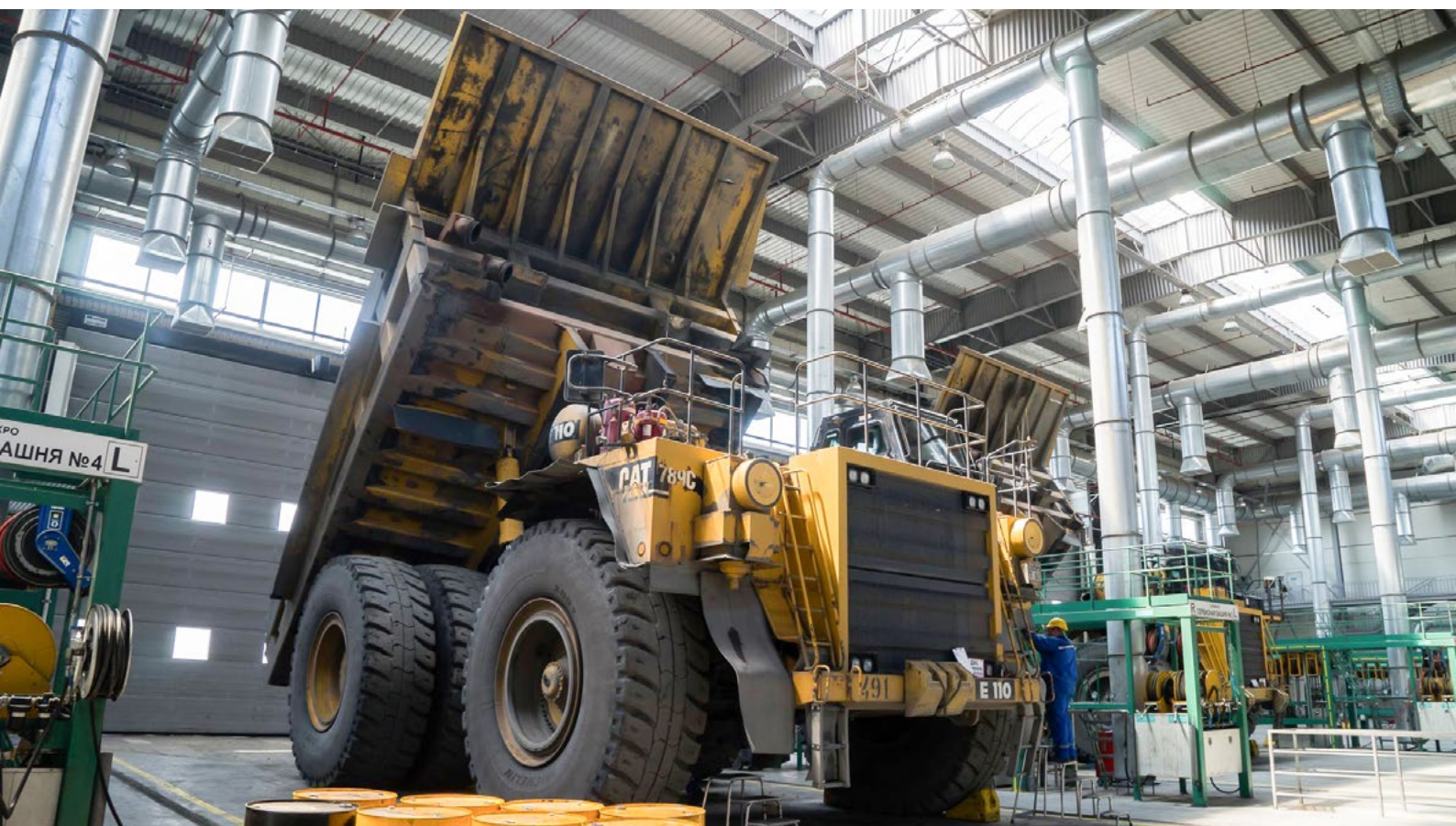
Repair and setup of machines and equipment:

- "Device" LLC
- "Radon" Production and Commercial Firm
- "Diesel" Firm LLC
- "Credo" Collective Enterprise
- "Ferrostroï" LLC
- "Vatra" Production and Commercial Enterprise
- PE "Production and Commercial Enterprise Enerhostal"
- SOE "Ferrotrans"



Manufacture of rubber and plastic products:

- "Leomi-Original" LLC
- "Mah" Foreign Trade Company



City's companies





The industry's companies make textile products, including dresses, blouses, coats, raincoats, a variety of knitwear, hosiery.



Garment production:

- “Krasa i Moda” Small Business
- “Sharme” LTD, Production and Commercial Enterprise
- “Lehkom” Industrial and Commercial Private Enterprise
- “Kosta” LLC, “Lehpromservis” Production and Commercial Firm
- “Tico-Prestige” Production and Commercial Firm
- “Tico-Marketing” Production and Commercial Firm
- “Marketing” Production and Commercial Firm
- “Margo” Production and Commercial Firm
- PE “Dina”
- “Kvinta” Production and Commercial Firm
- PE “Lote”
- PE “Biustero”
- “Lehkom” Industrial and Commercial Private Enterprise
- Valerie-Tex LLC
- Chic LLC
- “Prestige-T” Production and Commercial Firm
- PE “Flamingo Textile”



Industrial park

ANYTHING YOU NEED FOR A PROMPT IMPLEMENTATION OF INVESTMENT PROJECTS:

- greenfield lands of up to 40 hectares;
- utility networks to deliver electricity, heat, water, and gas;
- a developed transport infrastructure of highways, railway tracks, a cargo river port;
- an educated, creative, and vigorous workforce.

PRIORITIZED AREAS OF INVESTMENT PROJECTS:

- OEM assembly of agricultural machinery and electric vehicles;
- processing of agricultural products to make dietary supplements and medicinal food;
- manufacture of boats, yachts, and other vessels made from composite materials.



Horishni Plavni has already been chosen by investors from the UK, Denmark, Iceland, Canada, Norway, the USA, Switzerland, Sweden, and Finland. Today we are waiting for you!



EXISTING TRANSPORT INFRASTRUCTURE:

- Local highways (along the plot), **11.05 km** to the national highway
- Railway (along the plot)
- Cargo river port, **6.3 km**
- Natural gas refueling station, **230 m**

EXISTING TECHNICAL INFRASTRUCTURE:

- Power substation, **1.5 km**
- Drinking water pipeline, **300 m, 1.5 km**
- High and low pressure natural gas networks, gas distribution station, **100 m**
- Fiber optic cable, **150 m**

RECREATION AREA

- Park area, public gardens, boulevards, **106.2 ha**
- Landscape reserve, **714.7 ha**

INDUSTRIAL AREA

- Industrial area: **5,509 ha**

RESIDENTIAL AREA

- Residential area: **340.2 ha**

FREE LAND

- Area: **168.9 ha**

BENEFITS OF DOING BUSINESS IN HORISHNI PLAVNI

The city's geographical location, developed mining and knitting industries, which are a powerful source of revenues for the city budget and a solid basis for doing business as a small or medium-sized enterprise.

Horishni Plavni boasts a modern Administrative Services Center that serves businesses and the public. The city has a well-developed utilities, technical, and industrial infrastructure that features 37 large industrial companies. In addition to the mining and processing industries, it has the light, chemical, food, metal processing, repair, and service sectors.

Horishni Plavni has skilled human resources.

Vocational education is delivered by the Polytechnic College of Kremenchuk National University named after Mykhailo Ostrohradskyi and the Higher Vocational School of Mining and Civil Engineering.

Horishni Plavni educational institutions train talent catering to investors' individual needs.

The city provides incentives such as low local taxes and charges, guarantees of high public security, social stability, and respect for investors' property rights.

Horishni Plavni is a leader in terms of open government, efficient government, professional assistance and support of investors.

The city has received energy efficiency investments from nine countries, including Great Britain, Denmark, Iceland, Canada, Norway, the USA, Switzerland, Sweden, and Finland.

**Strategic plan of city
development available**

**Master Plan and the City
Development Rules available**

A developed export industry

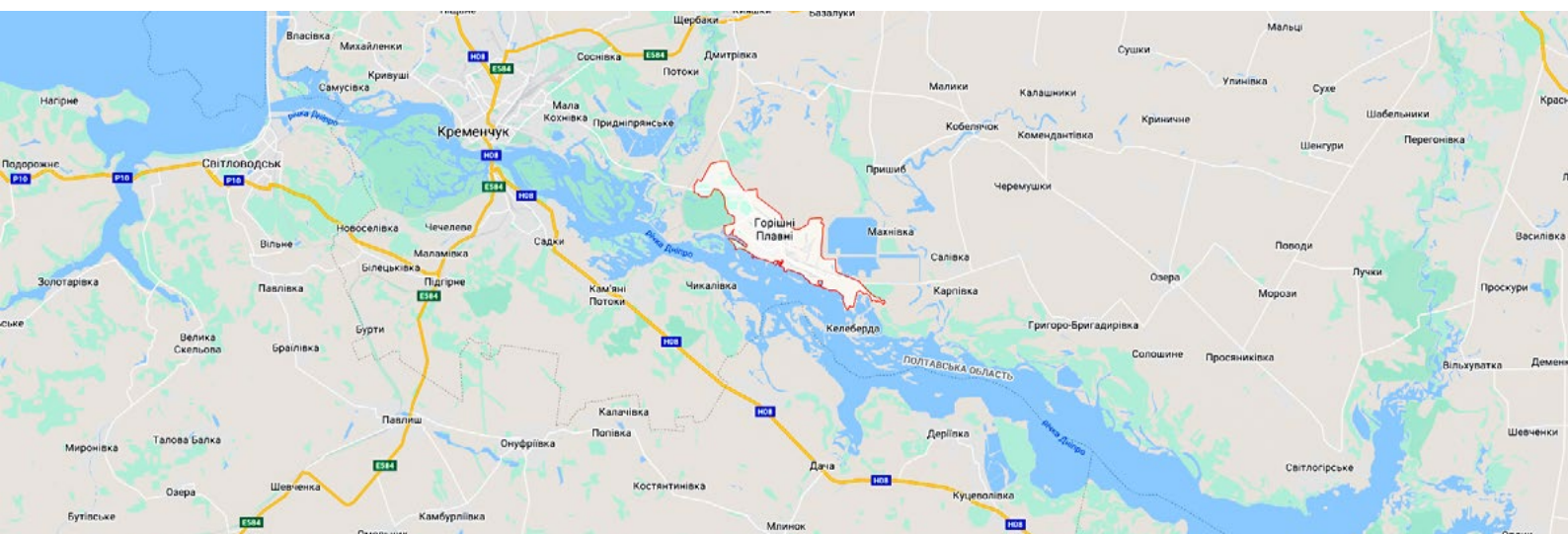
**A developed financial
infrastructure**

**Facilitation by local
authorities**

**Business support
infrastructure available**

Favorable geographical location

**An interesting
Investment Proposal**



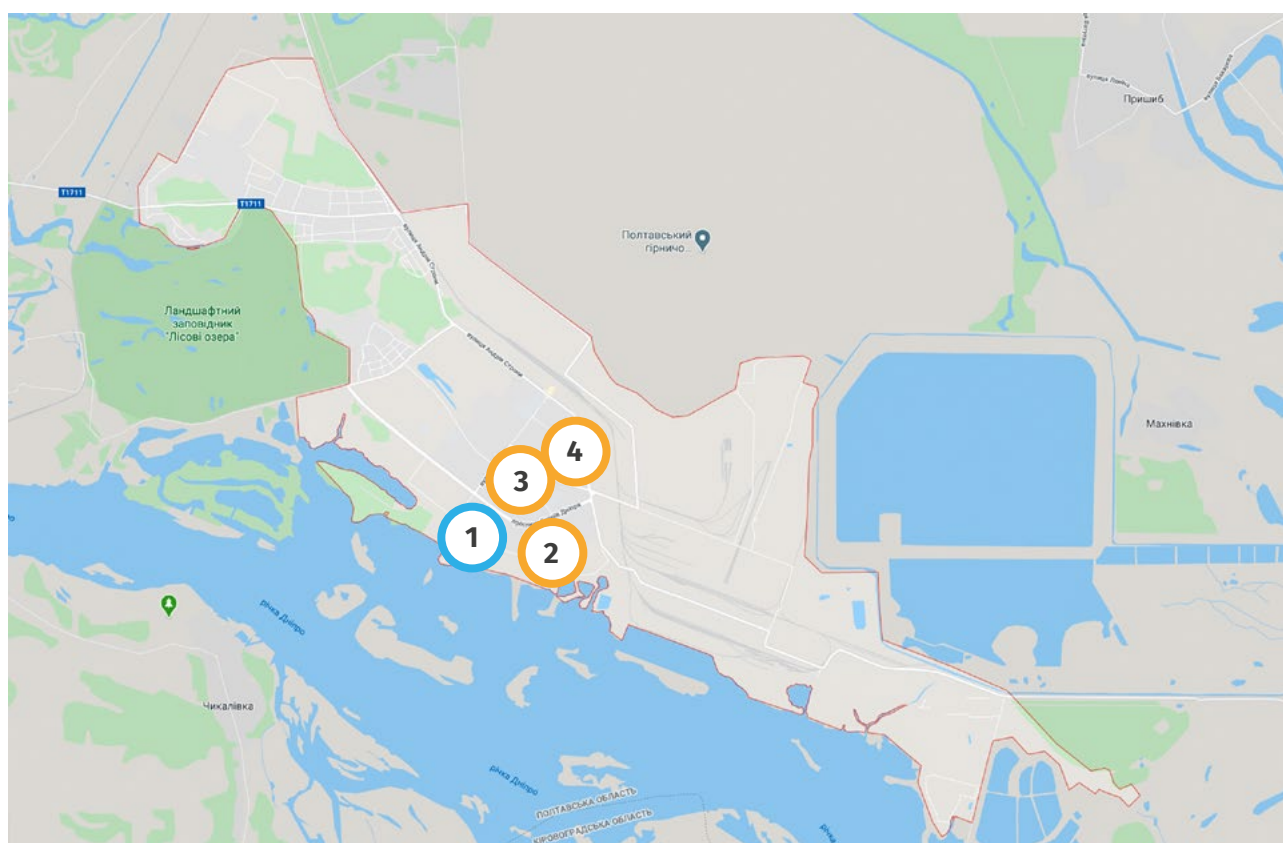
Office and industrial space

SPACE AVAILABLE FOR MANUFACTURING

№	Property	Owner	Area, m ²
1	Non-residential space on the 1st and 2nd floors of a shared entrance building 26 Konstytutsii street, Horishni Plavni	Horishni Plavni City Amalgamated Territorial Community	335,80

AVAILABLE OFFICE SPACE

№	Property	Owner	Area, m ²
2	Non-residential space on the 1st floor of a shared entrance building 10/5 Konstytutsii street, Horishni Plavni	Horishni Plavni City Amalgamated Territorial Community	173,7
3	Non-residential space on the 1st floor of a building 30 Heroiv Dnipro avenue, Horishni Plavni	Horishni Plavni City Amalgamated Territorial Community	61,40
4	Non-residential space on the 1st floor of a building 10 Molodizhna street, Horishni Plavni	Horishni Plavni City Amalgamated Territorial Community	78,69



Banking

JSCB Industrialbank	28 Dobrovolskoho street 78 Heroiv Dnipra avenue 12 Molodizhna street
PJSC CREDIT AGRICOLE BANK	54 Heroiv Dnipra avenue
MetaBank, Branch No. 100	11-A Andriia Strony street
JSC Oshchadbank	54 Heroiv Dnipra avenue
PJSC Poltava-Bank	17/33 Myru street
PJSC CB Privatbank	75 Heroiv Dnipra avenue 23 Heroiv Dnipra avenue
JSC Raiffeisen Bank Aval	18 Hirnykiv street
JSC JSB Ukrgasbank	42 Heroiv Dnipra avenue
JSC Ukrsibbank	28 Dobrovolskoho street
PJSC Crystalbank	65 Heroiv Dnipra avenue
PJSC CB Accordbank	75 Heroiv Dnipra avenue

Hotel services

Olvia Hotel
(140 guests)

1 Naberezhna street
+38 (053) 482-26-05, (067) 535-41-08

**Community-Owned
Hotel "Slavutych"**
(170 guests)

2 Naberezhna street
+38 (053) 484-42-12, (068) 921-67-03
hotel-slavutich.in.ua slavut@i.ua



STRATEGIC VISION OF THE CITY

Horishni Plavni is a young, green, and bright city of ongoing development and investment appeal on the Dnipro's banks.



The mining center, Ukraine's cleanest industrial city with high energy efficiency and energy saving performance.



The city is the European capital of knitwear fashion with its own brands, thriving competitive high-yield small and medium-sized enterprises.



A city of industrial, sports, art, historical, and educational tourism.



It is a modern city that has an active community that can work with local authorities and is highly comfortable for locals and guests alike to live in.



Executive Committee of Horishni Plavni City Hall

24 Myru Street, Horishni Plavni,
Poltava region, 39800

+38 (05348) 4-44-60, 6-16-81,

+38 (067) 470-81-12

(Mayor's reception)

+38 (05348) 4-44-62, 6-16-80,

+38 (067) 532-05-72

(information desk)

Department of Economic Development and Resources of the Executive Committee of Horishni Plavni City Hall

d_economic@hp-rada.gov.ua

+38 (05348) 4-44-60, 6-16-81,

+38(067) 470-81-12



The Investment Passport of Horishni Plavni ATC was developed and published with the support of the Partnership for Local Economic Development and Democratic Governance Project (PLEDDG), an international technical assistance project implemented by the Federation of Canadian Municipalities (FCM) and financed by Global Affairs Canada.

The views and opinions expressed herein are the responsibility of the authors and do not state or reflect those Global Affairs Canada.



**You are welcome in our city,
Horishni Plavni!**

